

Stainless Steel Crowns

Oral Health Social Story



*This written information is to support the
discussions held with your healthcare provider*

DEC24/V1 CATALOGUE CC12952K-E



Stainless Steel Crowns

Sometimes our baby teeth can get holes in them, when our baby teeth have holes in them, we need to fix the tooth by placing silver princess crowns or superhero crowns.



We need to fix those holes,
so they don't make you sick.



To fix your tooth we use silver princess crowns or superhero crowns.

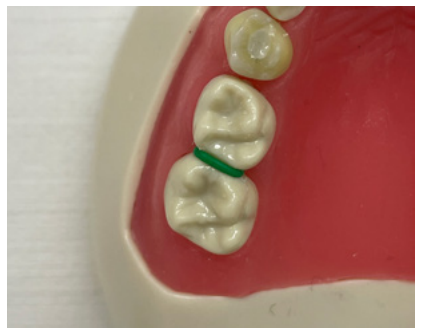
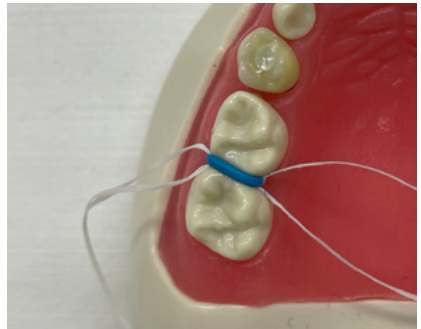
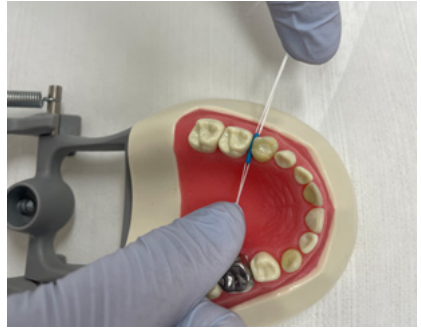


Before placing crowns, we need to make some space between your teeth using “separators” or little donuts.

We place the little donuts using two pieces of floss.

The little donuts are blue or green.

The little donuts will feel like a bit of food stuck between your teeth.



We leave the little donuts in-between your teeth for one or two days, and then remove them ready to place the silver crown on your tooth.

We have lots of different sizes to pick from and we pick the right size for your tooth.



We mix glue in the mixer, then fill your new crown with glue and put it on your tooth.



Now you get to bite down on a pillow really hard, and then you are done!



Now you can smile
with your new
silver crown!

We hope you
love it !

