

Gosford & Wyong Hospital

Medical Imaging and Nuclear Medicine

OUTPATIENT REFERRALS

Your Doctor has recommended that you use Gosford and Wyong Hospital Medical Imaging services. You may choose another provider but please discuss this with your Doctor first.

We bulk bill all Medicare Eligible imaging services.

Opening Hours

(Outpatients)

Gosford Hospital

All Radiology Services:

8:00am – 4:00pm (Mon to Fri)

Additional Hours:

MRI:

8:00am – 4:00pm (Mon–Sun)

Ultrasound:

8:00am – 6:00pm (Mon–Fri)

Nuclear Medicine:

8:00am – 4:30pm (Mon–Fri)

Wyong Hospital

All Radiology Services:

8.00am – 4.00pm (Mon–Fri)

Ultrasound:

8.00am – 4.00pm (Mon–Sun)

Practice Procedure List

Practice Procedure	Gosford Medical Imaging & Nuclear Medicine	Wyong Medical Imaging Dept.
MRI	✓	✓
Low dose CT Scan	✓	✓
Low dose CT Coronary Angiography	✓	
Ultrasound	✓	✓
X Ray	✓	✓
Interventional Radiology	✓	✓
Dental (OPG/Cephalogram)	✓	
DEXA (BMD)	✓	
Nuclear Medicine (SPECT CT)	✓	

Name, DOB, Address

PATIENT

Request to consult and perform the following procedure:

Procedure Details

EXAM/PROCEDURE

Clinical History, Previous Imaging

REASON FOR REQUEST

Possibility of pregnancy? Yes No

If patient requiring IV contrast, recent creatinine level/eGFR

Date of renal function

Referrer contact details (phone and address):

Provider No:

Mandatory Information

Copies To:

REFERRING DOCTOR

Signature:

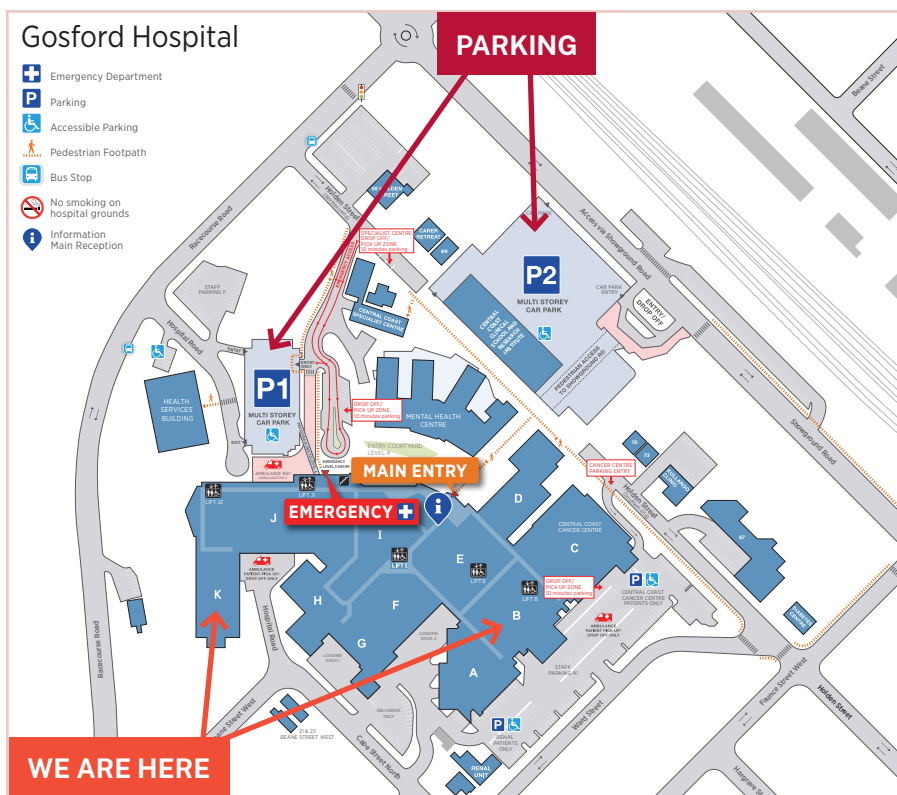
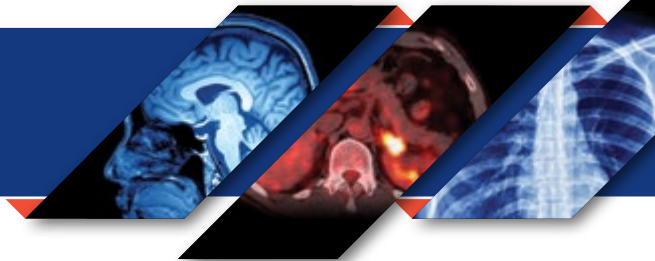
Date:

Results

Fax USB Email Request for new Referral Pads



Central Coast
Local Health District



Bookings

General Enquiries: 4320 2540
Booking Team Fax: 4320 2833
Email: CCLHD-MIBookings@health.nsw.gov.au

Gosford Hospital

Holden Street, Gosford
Nuclear Medicine Enquiries: 4336 6457
Nuclear Medicine Fax: 4320 9421
Email: CCLHD-Nuclearmed@health.nsw.gov.au

Radiology (B4)

Level 4, Block B

Medical Imaging & Nuclear Medicine (K3)

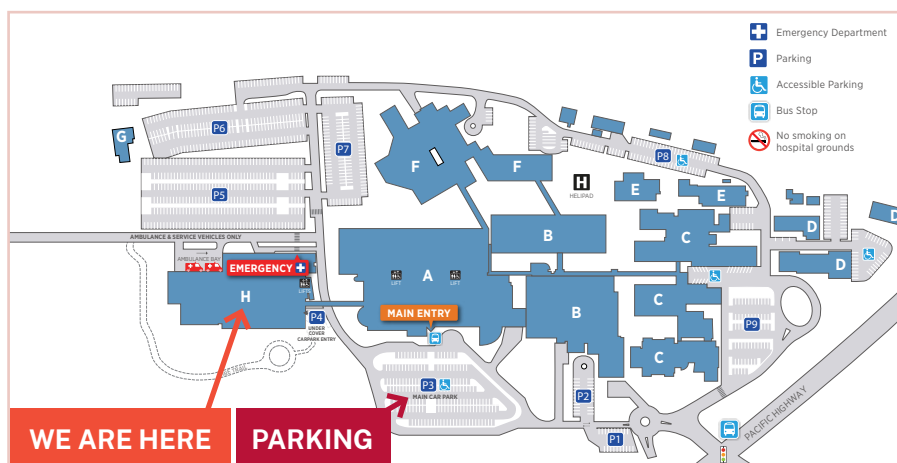
Level 3, Block K

Gosford Hospital Parking

P2 multistorey car park off Showground Road (closer to B4).

P1 multistorey car park Racecourse Road (closer to K3).

Follow signs from Hospital entrance to either B4 Radiology or K3 Medical Imaging and Nuclear Medicine.



Wyong Hospital

Pacific Highway, Kanwal

Medical Imaging Department (Block H)

Telephone: 4394 8366
Fax: 4394 8050

Wyong Hospital Parking

Parking is available in front of the hospital near the main entrance. Follow the signs from the main entrance to find medical imaging.



Scan the QR code
to go to our website

Your Appointment Location

Gosford B4

Gosford K3

Wyong

Please be advised you will receive SMS communication with your appointment details.