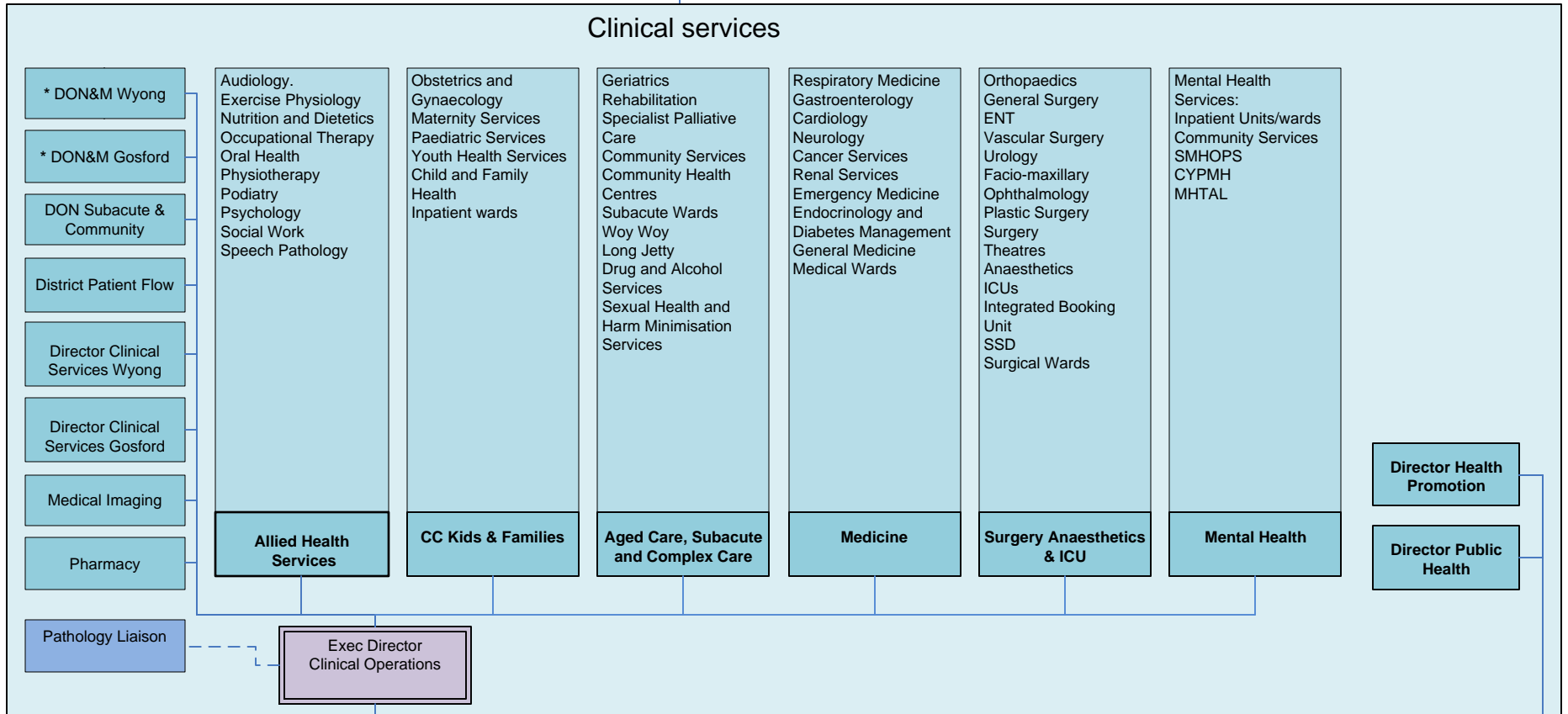


CENTRAL COAST LOCAL HEALTH DISTRICT ORGANISATIONAL CHART - Clinical Services

Our Patients and Our Community

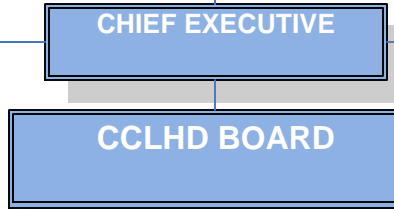
Our Staff



- Exec Director Finance, Corporate & Capital Works
- Exec Director Nursing & Midwifery
- Exec Director Strategy & Innovation
- Exec Director Clinical Governance
- Exec Director Medical Services
- Exec Director Workforce & Culture
- Exec Director ICT (SPA)

- Director Health Promotion
- Director Public Health

- * Clinical Services Managed by DON&M Gosford and Wyong:**
- Outpatient Department
 - Ambulatory Care
 - After Hours Nurse Management
 - Patient Flow



- Chief Executive Direct Reports (in addition to above):**
- Executive Assistant
 - Manager Corporate Communications
 - Manager Ministerial and Executive Services
 - Manager Corporate Governance and Risk
 - Director Internal Audit