

CENTRAL COAST LOCAL HEALTH DISTRICT ORGANISATIONAL CHART

Our Patient and Our Community

Our Staff

Executive Leadership Team

District Director ICT

District Director Workforce & Culture

District Director Asset Management, Finance & Procurement

District Director Quality, Strategy and Improvement

District Director Medical Services

District Director Nursing & Midwifery HSFAC

Executive Director Operations

Director Public Health

Director Health Promotion

Manager Aboriginal Health

Director Internal Audit

CHIEF EXECUTIVE

**BOARD
CENTRAL COAST LOCAL HEALTH DISTRICT**

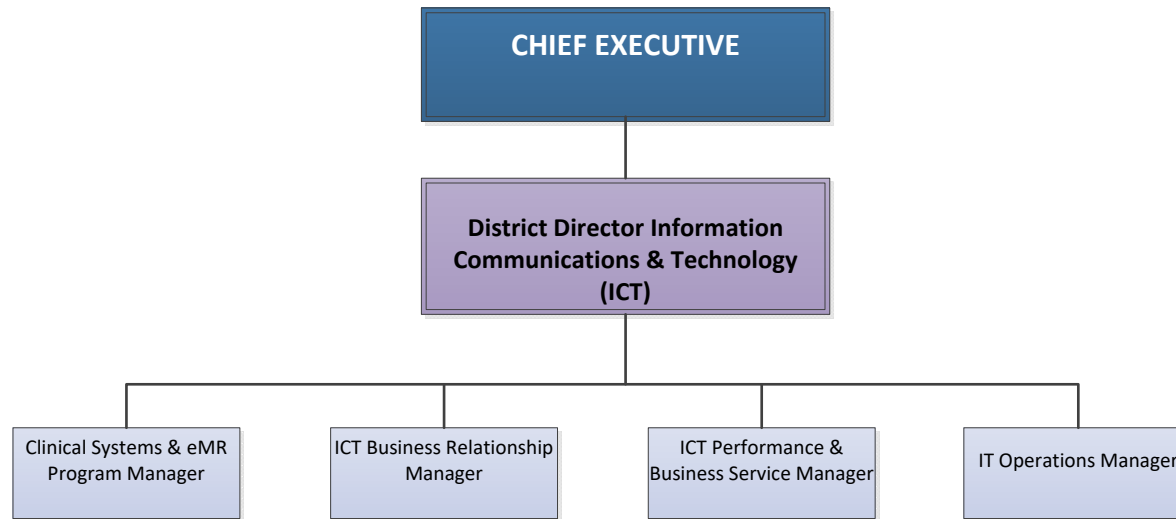
Manager Corporate Communications

Manager Corporate Governance & Risk

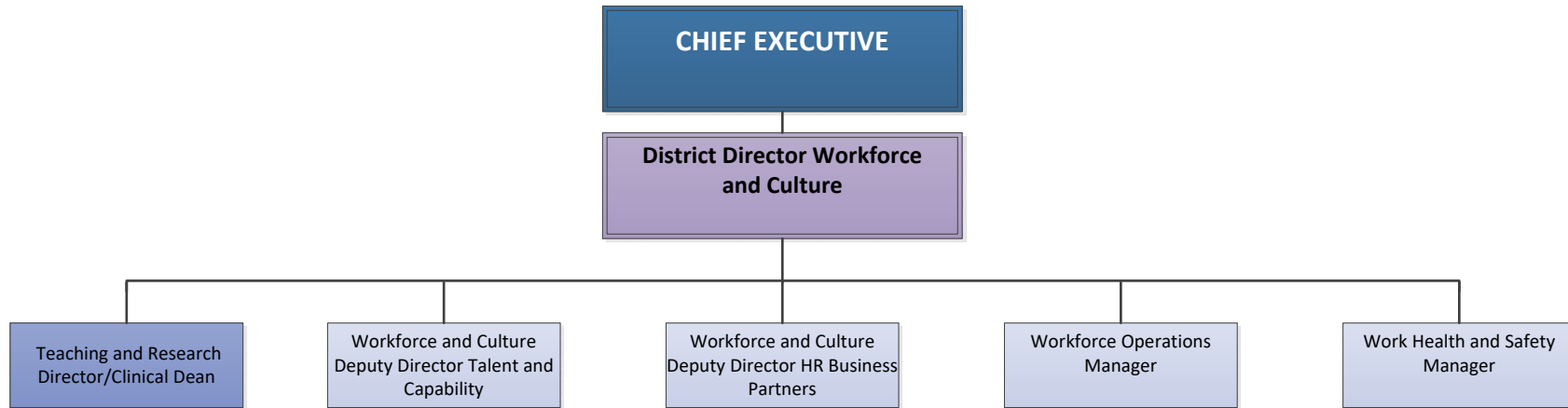
Manager Ministerial & Executive Services

Executive Assistant to CE

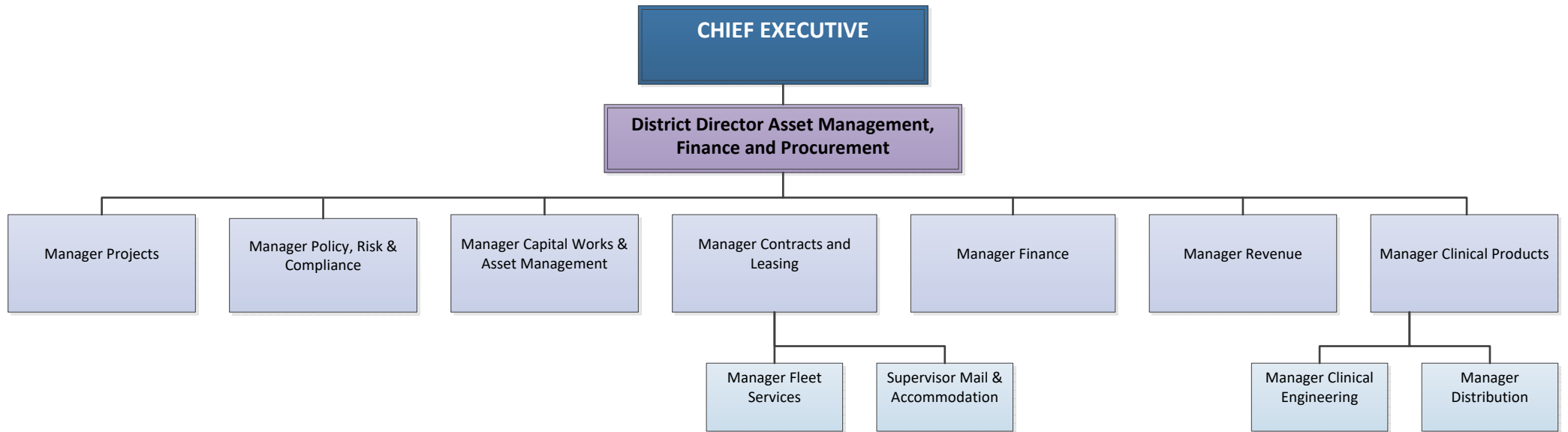
INFORMATION, COMMUNICATIONS AND TECHNOLOGY



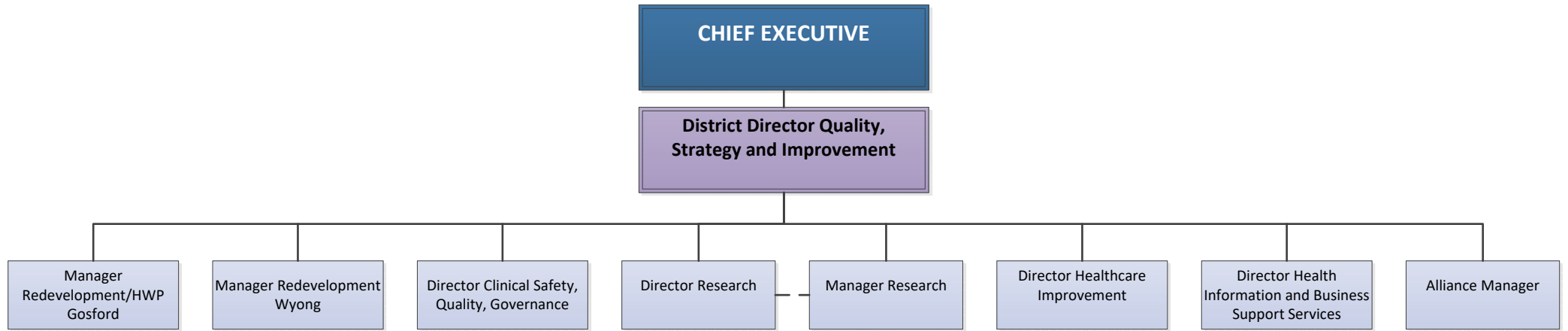
WORKFORCE AND CULTURE



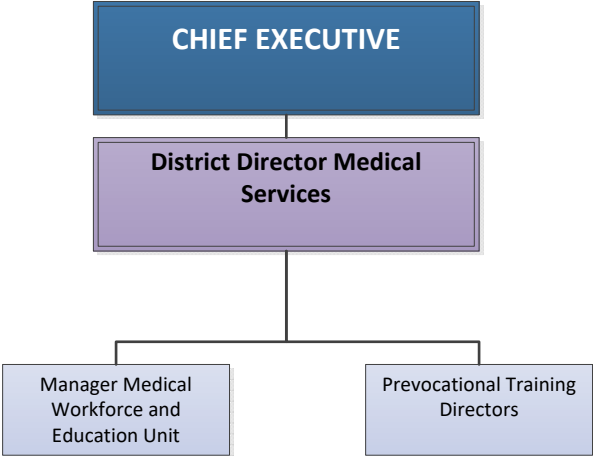
ASSET MANAGEMENT, FINANCE AND PROCUREMENT



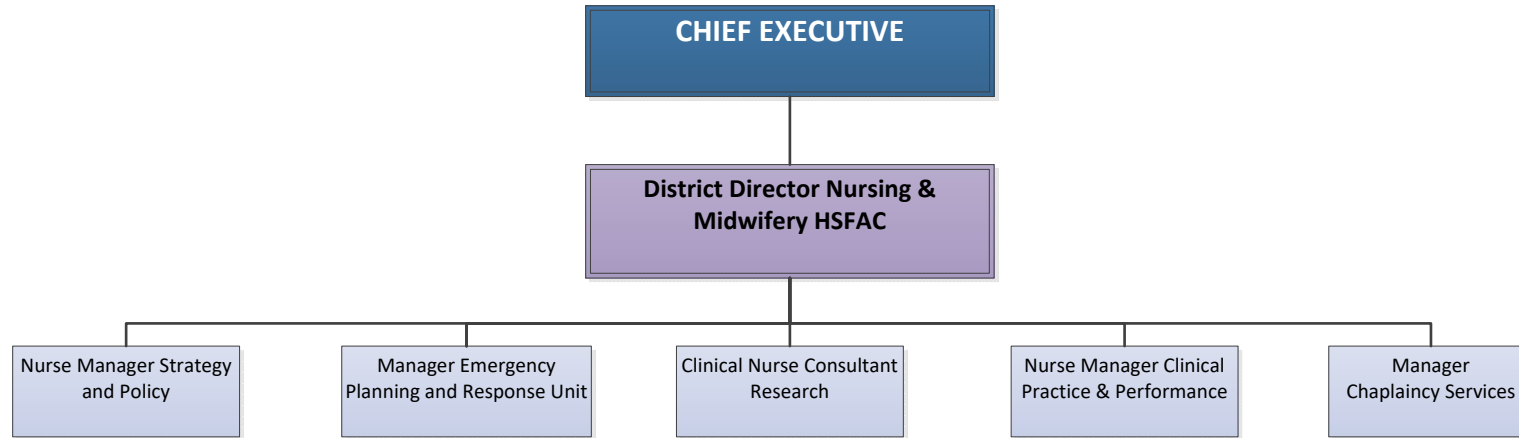
QUALITY, STRATEGY AND IMPROVEMENT



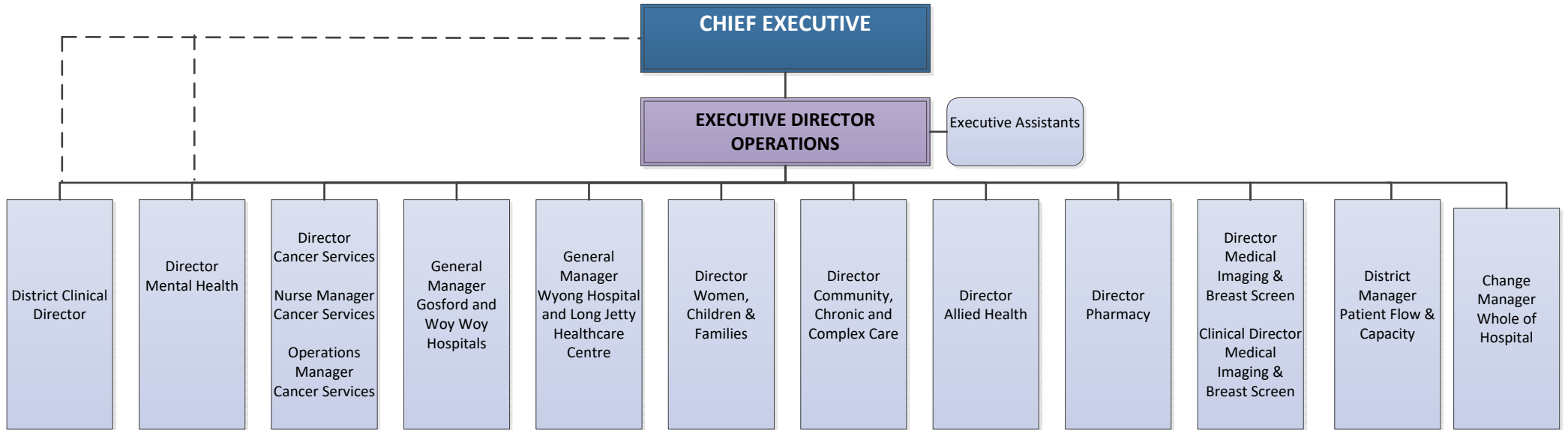
MEDICAL SERVICES



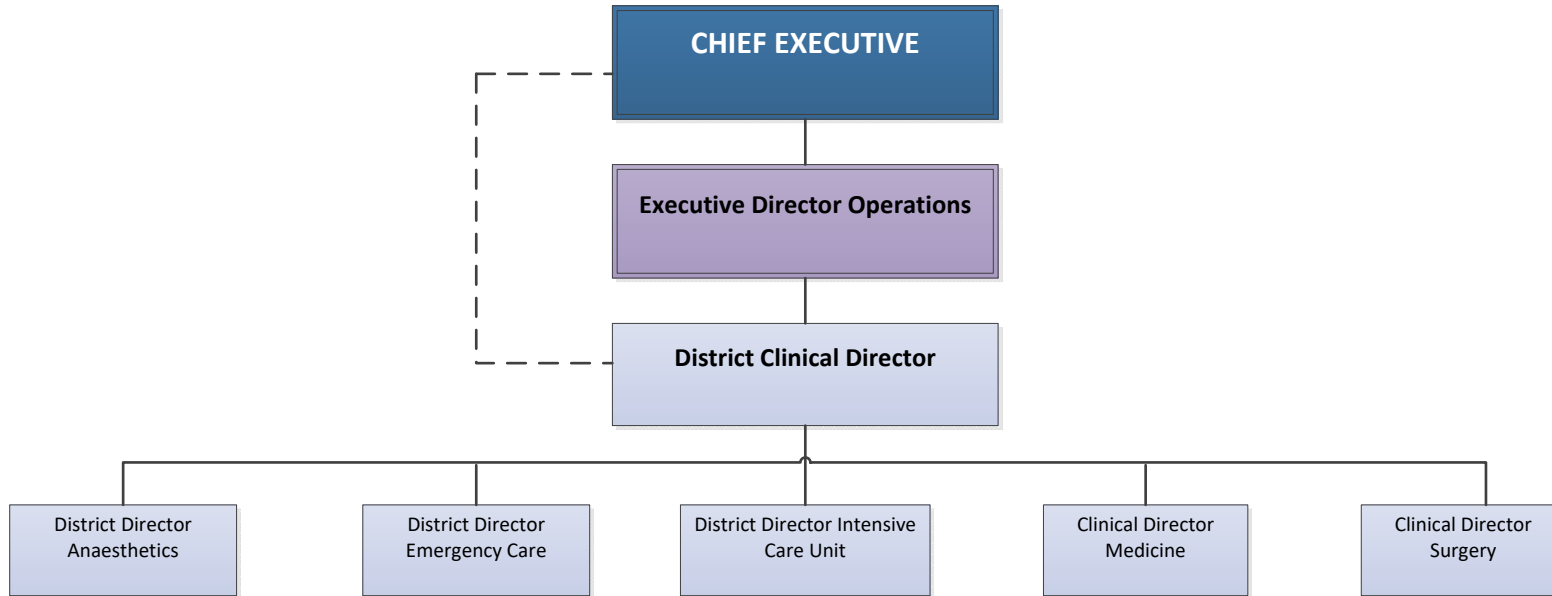
NURSING AND MIDWIFERY



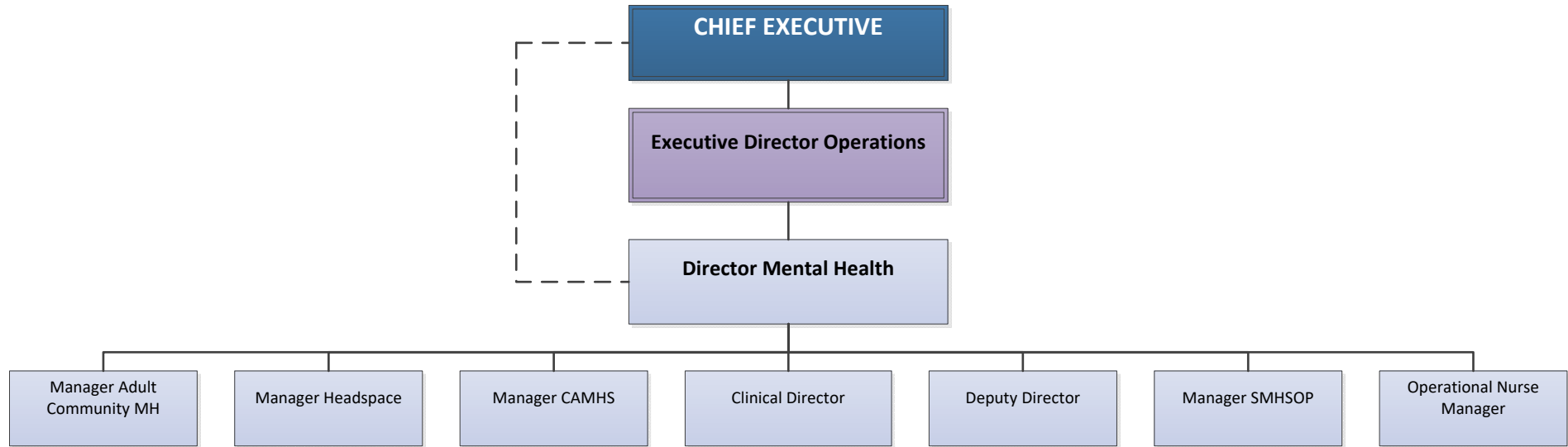
OPERATIONS



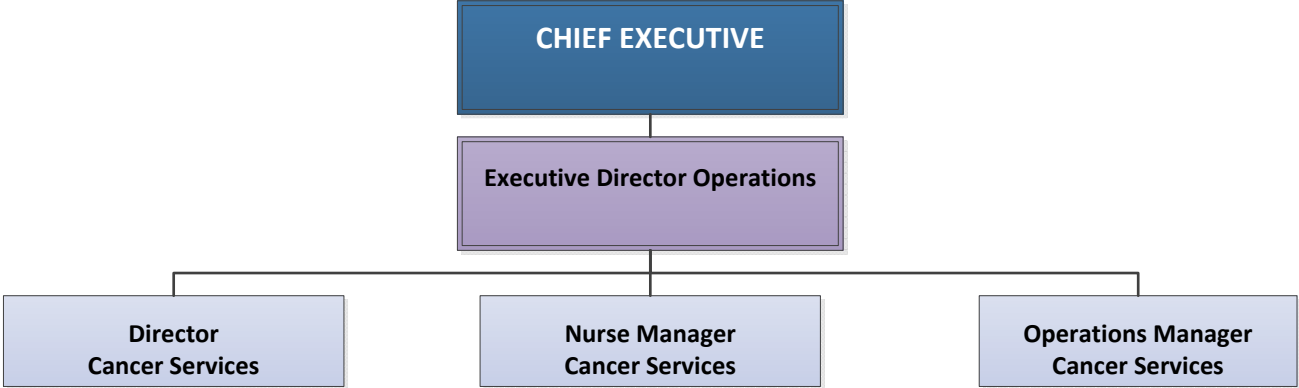
DISTRICT CLINICAL DIRECTOR



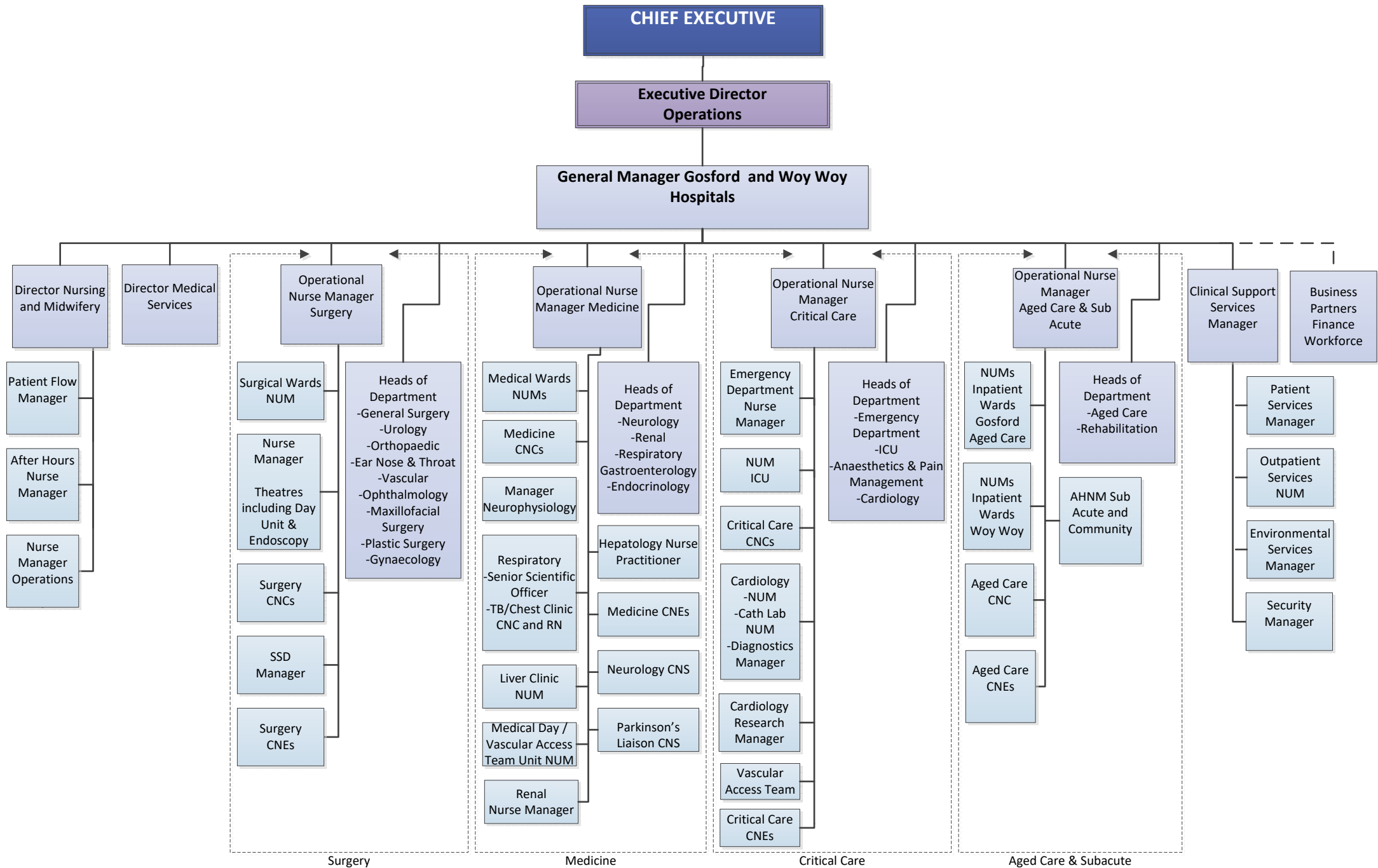
MENTAL HEALTH



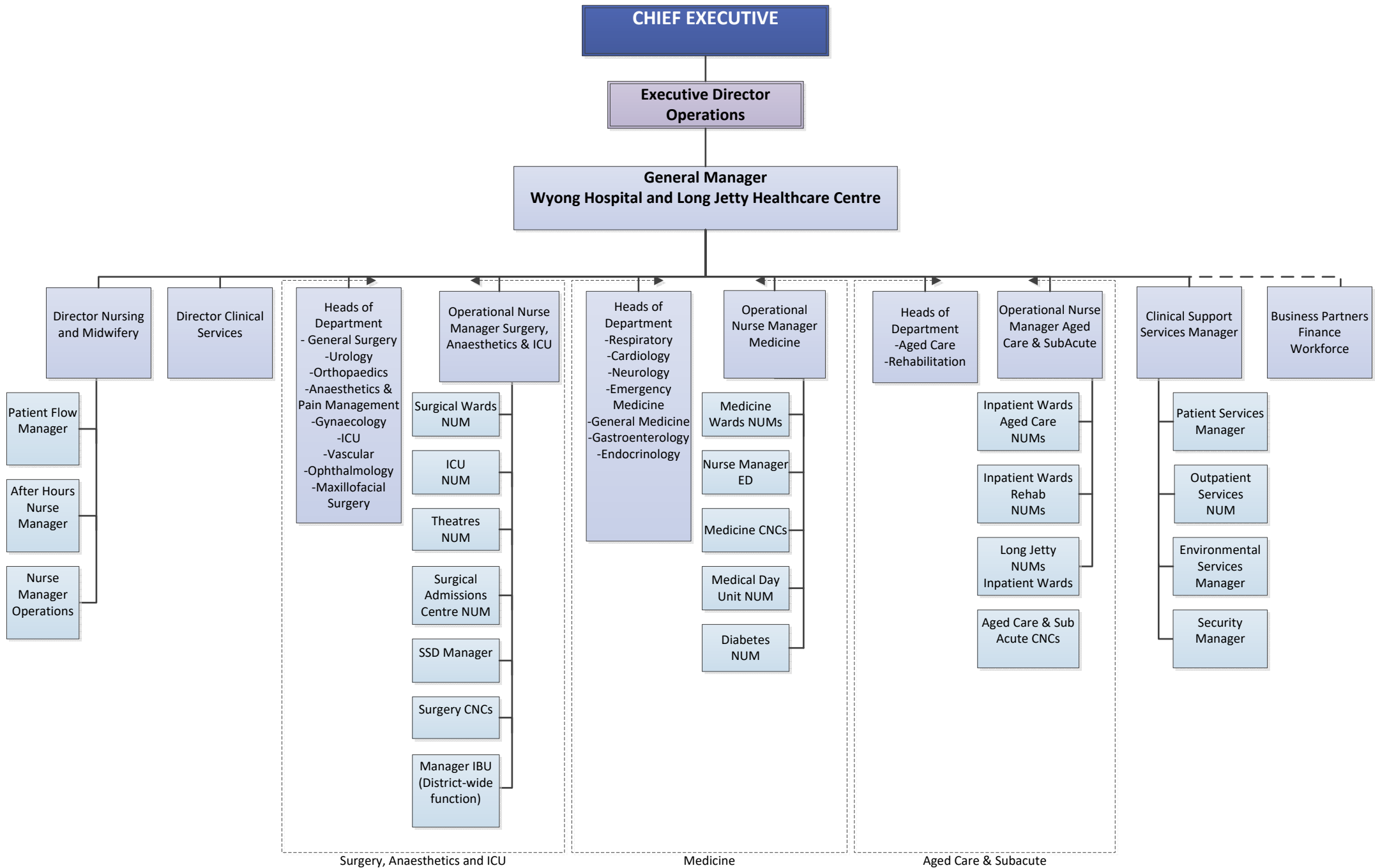
CANCER SERVICES



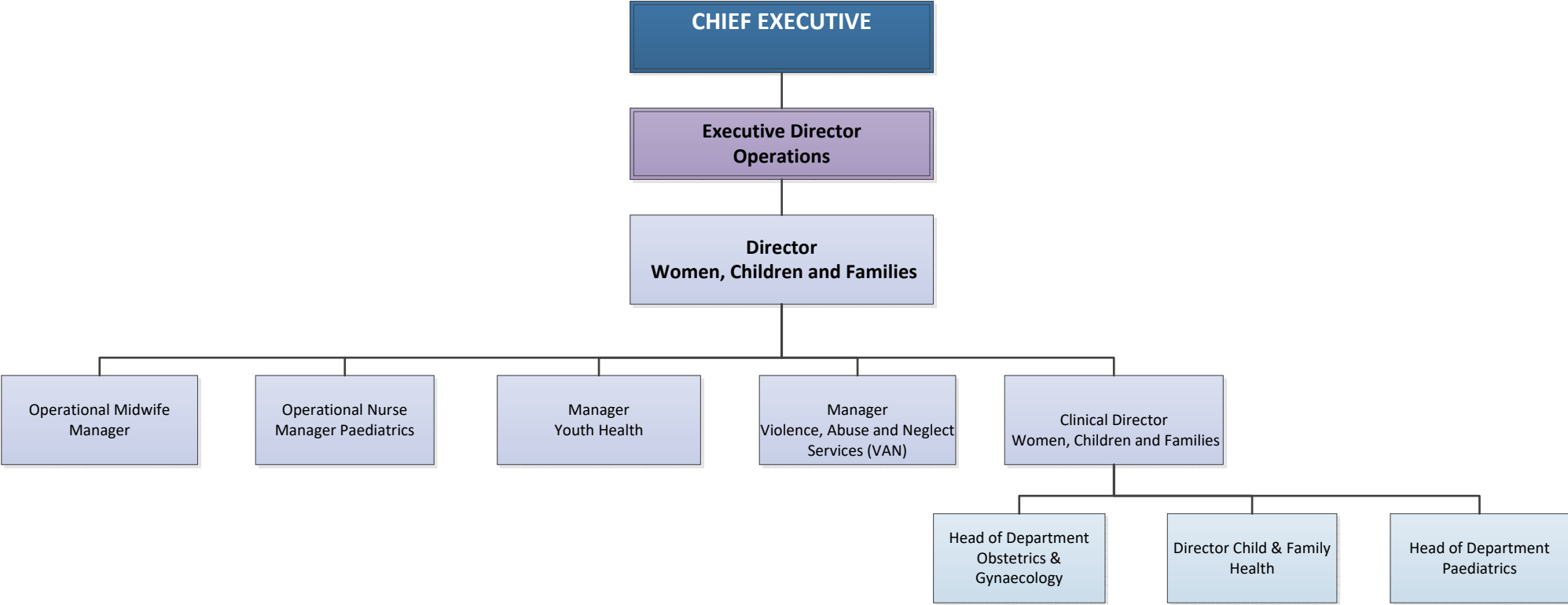
GENERAL MANAGER GOSFORD AND WOY WOY HOSPITALS



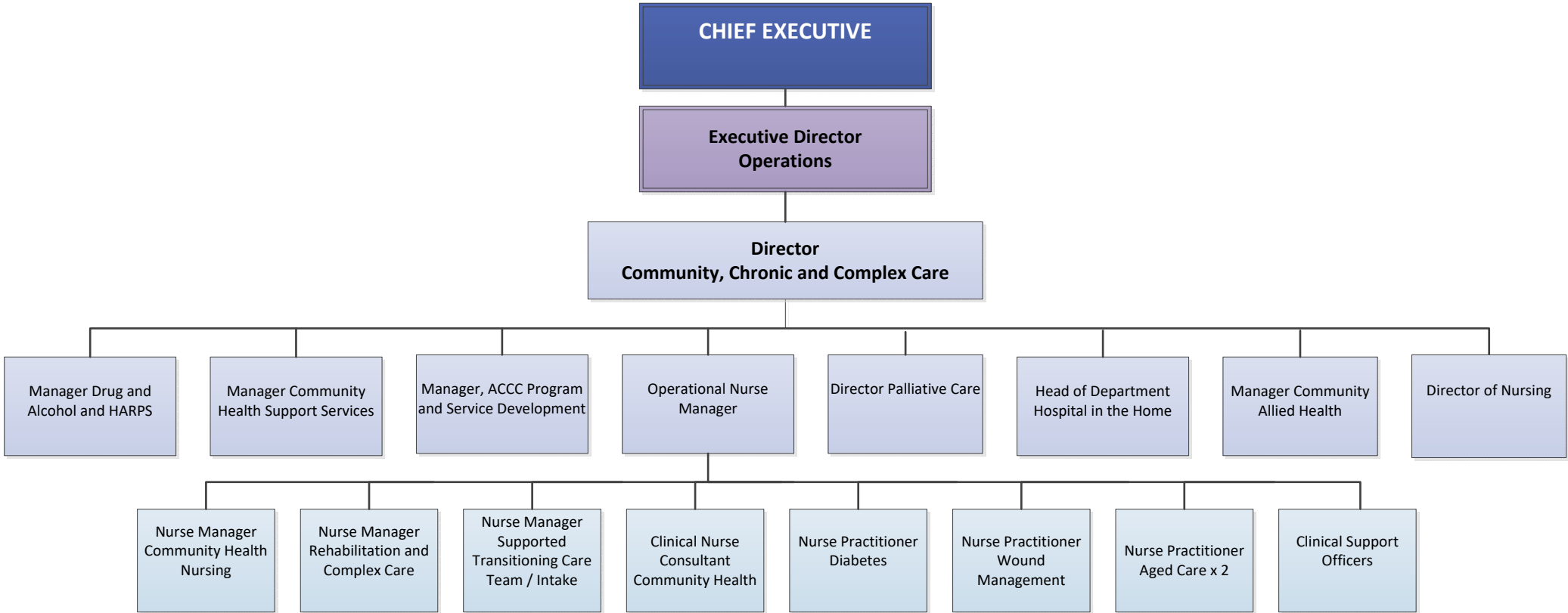
GENERAL MANAGER WYONG AND LONG JETTY HEALTHCARE CENTRE



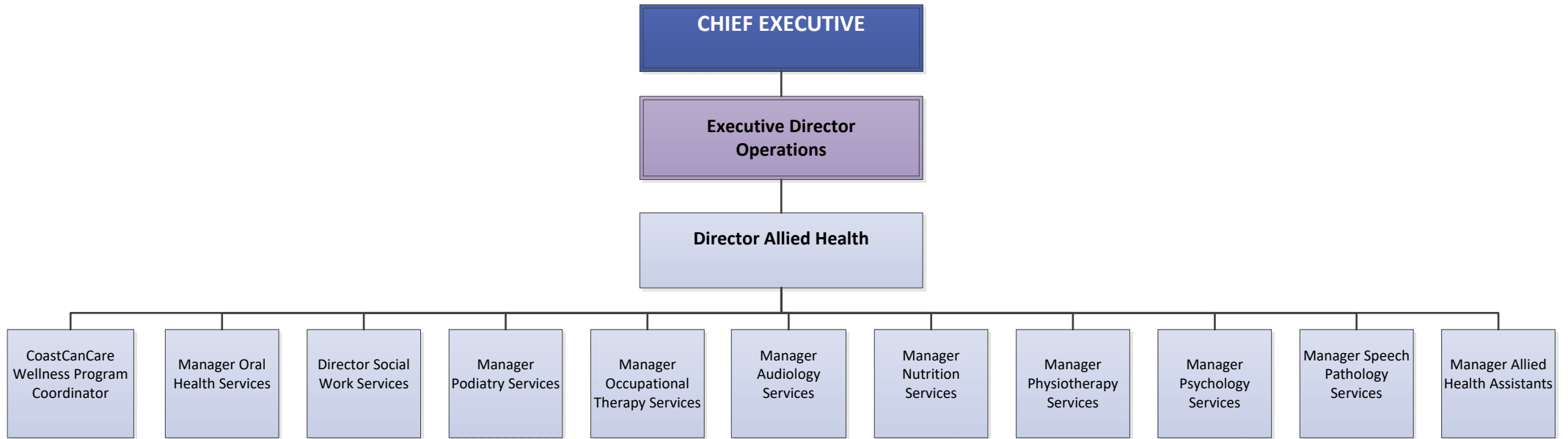
WOMEN, CHILDREN AND FAMILIES



COMMUNITY, CHRONIC AND COMPLEX CARE



ALLIED HEALTH



Pharmacy

CHIEF EXECUTIVE

**Executive Director
Operations**

Director Pharmacy

Manager Pharmacy Procurement
and Inventory

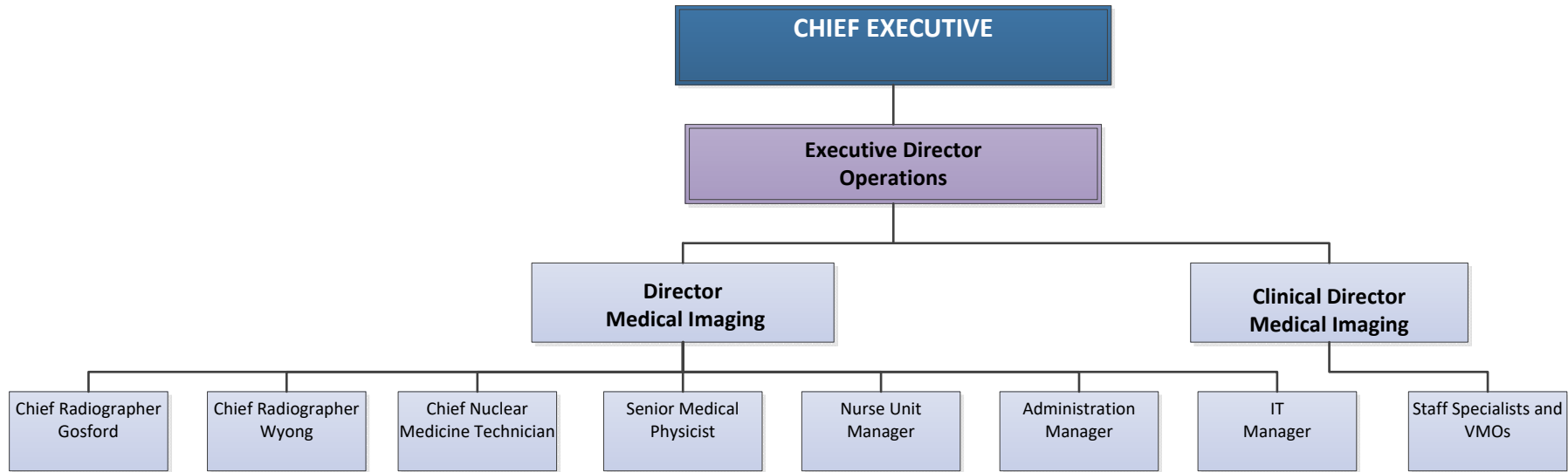
Deputy Director – Gosford Hospital

Deputy Director – Wyong Hospital

Team Leader – Quality Use of
Medicines and Education

Team Leader – Production,
Clinical Trials and Cancer Services

MEDICAL IMAGING AND BREAST SCREEN



DISTRICT PATIENT FLOW

